

Overview:

Designed for busy surgeries and health centres, this multi-purpose model provides general examination facilities for various procedures including phlebotomy, gynaecology and podiatry, etc. This model features electric operation of height and Trendelenburg tilt to -20° . Phlebotomy armrests are fitted for blood taking and lithotomy stirrups are included for gynaecology procedures. The couch is suitable for supine and prone lying procedures and has a raising backrest for supporting the patient in a sitting position, with the foot section adjustable from horizontal to -90° for additional patient comfort. The couch has a space saving frame design and has castors for positioning or moving around the clinic. Also available without the Trendelenburg tilt as model 93MP.



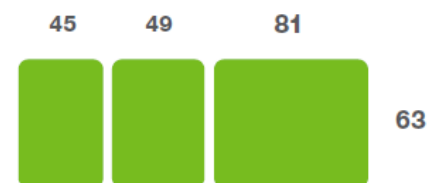
Benefits

- Lifetime frame & 5 year parts guarantee - see website for further details
- Electric operation of height and Trendelenburg tilt
- Supplied with stirrups and phlebotomy arms
- Breathing hole and plug for prone treatment procedures
- Adjustable backrest for supporting the patient in a sitting position
- The manual backrest can be adjusted to support the patient in a sitting position or instantly lowered to -15° for patient recovery in the event of fainting or light-headedness
- Foot section lowers to -90° for sitting procedures
- Safe working load of 250kgs (550lb / 39 stone)
- Retractable wheels provide easy movement and positioning of the couch
- Low patient transfer height of 52cm (20")
- Wide choice of options, width and accessories to meet user requirements

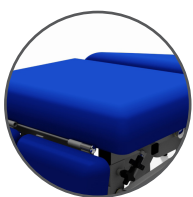
Overall Dimensions

Length: 177cm (70") approx
 Width: 63cm (25") approx
 Height: 52cm - 101cm approx
 (20" - 40") approx

Upholstery Dimensions



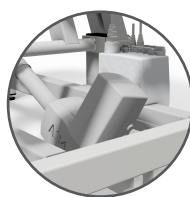
Options & Accessories:



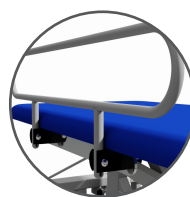
Double Foam



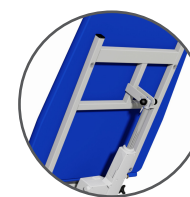
Arm Loops



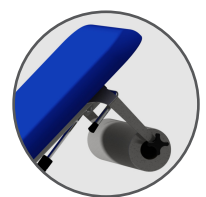
Battery Back-up



Fold-down Side Supports

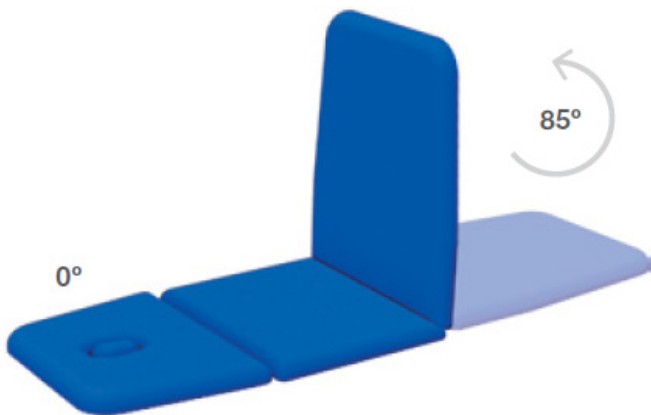


Motorised Backrest

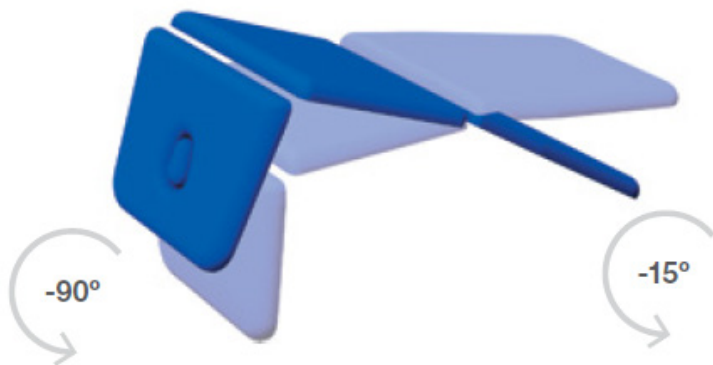


Paper Roll Holder

Operational Parameters



Trendelenburg Tilt 20°



Model 93MPT - Electric Version

Standard Features

- Designed and manufactured in the UK
- Lifetime frame & 5 year parts guarantee
- 16 year average lifespan
- Electric operation with Trendelenburg tilt
- Comfort foam
- Easy operation
- Low running costs
- Hardwearing anti-microbial vinyl
- Safe working load 250kg
- Retractable castors
- Hoist clearance 130mm
- Arm boards
- Phlebotomy arms
- Gynaecology stirrups

Technical Standards

- IP Rating - IPx4
- EEC Classification - MDD93/42/EEC Annex IX Class 1
- Electrical Standard - IEC601 Part 1 + 60601 P (EN)
- Vinyl Flame Retardant to CRIB 5 (BS 7176)
- Foam to BS 5852: Part 2: 1982, Ignition Source 5 [CRIB 5]
- CE Marked
- Externally audited to ISO9001:2015 by LRQA

Delivery Promise

- Delivery to UK mainland in just 7-10 working days
- Faster service may be available if required
- Overseas delivery 7-10 days plus shipping time

Upholstery Vinyl

- Flame retardant to BS 5852 Ignition Source 5 - CRIB 5 (BS 7176) Medium Hazard
- Independently tested to verify effectiveness at reducing the spread of MRSA, E.coli & other similar bacteria & fungi
- Rated at 500,000 Martindale rubs without damaging or marking the top layer, making it suitable for all high-traffic, heavy-duty areas
- Phthalate free
- Please note: If the upholstery colour is not specified, 'Almond' will be supplied



Plinth Medical Ltd
Barric Lane
Occold, Eye
Suffolk, United Kingdom
IP23 7PX

t: +44 (0)1449767887
e: sales@plinthmedical.com
www.plinthmedical.com

Plinth | Medical