



Overview:

The entry level G1 model features a choice of hydraulic or electric height operation and has a manually adjustable backrest and a seat section with cut-out area for gynaecology procedures. The option of a removable extension increases the overall length of the couch for patient positioning. The backrest can be instantly lowered to -15° head down to aid patient recovery in the event of fainting or light-headedness. Standard accessories include the matching head cushion, height adjustable armrests, leg supports, and removable debris tray.

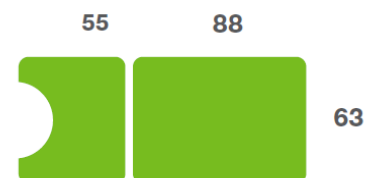
Benefits

- Lifetime frame & 5 year parts guarantee - see the website for further details
- Option of electric or hydraulic height operation
- Adjustable angle backrest with instant lowering to -15° to aid patient recovery
- Seat section with cut-out and option of extension for patient recovery
- Leg supports with both height adjustment and multi-angular positioning
- Height adjustable arm supports for patient comfort and security
- Matching head cushion for patient comfort
- Safe working load of 250kgs (550lb / 39 stone)
- Retractable wheels provide easy movement and positioning of the couch
- Low patient transfer height of 52cm (20")
- Wide choice of options, width and accessories to meet user requirements

Overall Dimensions

Length: 144cm (57") approx
with seat extension 180cm (71")
Width: 63cm (25") approx
Height: 52cm - 101cm approx
(20" - 40") approx

Upholstery Dimensions



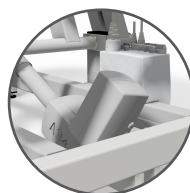
Options & Accessories:



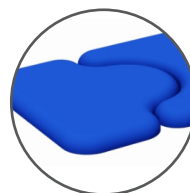
Classic Operators Chair



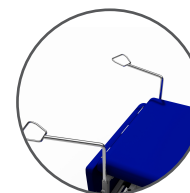
Foot Switch Operation



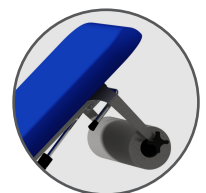
Battery Back-up



Seat Extension



Lithotomy Stirrups



Paper Roll Holder

NHS Approved Supplier



t: +44 (0)1449 767887
e: sales@plinthmedical.com
www.plinthmedical.com

Operational Parameters



Model 93G1E - Electric Version

Model 93G1H - Hydraulic Version

Standard Features

- Designed and manufactured in the UK
- Lifetime frame & 5 year parts guarantee
- 16 year average lifespan
- Electric or hydraulic height operation
- Comfort foam
- Easy operation
- Low running costs
- Hardwearing anti-microbial vinyl
- Safe working load 250kg
- Retractable castors
- Hoist clearance 130mm
- Leg supports
- Arm loops
- Head cushion
- Stainless tray
- Gas spring operated backrest

Technical Standards

- IP Rating - IPx4
- EEC Classification - MDD93/42/EEC Annex IX Class 1
- Electrical Standard - IEC601 Part 1 + 60601 P (EN)
- Vinyl Flame Retardant to CRIB 5 (BS 7176)
- Foam to BS 5852: Part 2: 1982, Ignition Source 5 [CRIB 5]
- CE Marked
- Externally audited to ISO9001:2015 by LRQA

Delivery Promise

- Delivery to UK mainland in just 7-10 working days
- Faster service may be available if required
- Overseas delivery 7-10 days plus shipping time

Upholstery Vinyl

- Flame retardant to BS 5852 Ignition Source 5 - CRIB 5 (BS 7176) Medium Hazard
- Independently tested to verify effectiveness at reducing the spread of MRSA, E.coli & other similar bacteria & fungi
- Rated at 500,000 Martindale rubs without damaging or marking the top layer, making it suitable for all high-traffic, heavy-duty areas
- Phthalate free
- Please note: If the upholstery colour is not specified, 'Almond' will be supplied



Plinth Medical Ltd
Barric Lane
Occold, Eye
Suffolk, United Kingdom
IP23 7PX

t: +44 (0)1449767887
e: sales@plinthmedical.com
www.plinthmedical.com

Plinth | Medical