

### Overview:

This model has been designed to provide movement of the patient within the clinic or department for recovery purposes or for transferring them to other areas of the hospital. For this purpose, the couch is fitted with a large wheel system with steering facility and side support rails for patient security. Additionally, there is an adjustable backrest and foot section to support the patient in a sitting position and there is a choice of hydraulic or electric height operation.

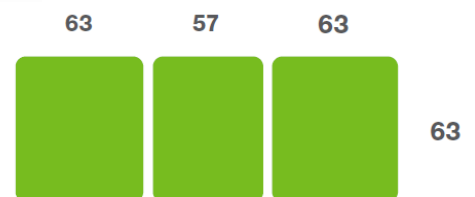
### Benefits

- Lifetime frame & 5 year parts guarantee - see the website for further details
- Suitable for patient transport
- Adjustable angle backrest and foot section for supporting the patient in a sitting position
- Choice of hydraulic or electric height operation
- Safe working load and lifting capacity of 250kg (550lb / 39 stone)
- Large wheel system with steering facility
- Fold-down side support rails and paper roll holder fitted as standard
- Low patient transfer height of 50cm (20")
- Wide choice of options, width and accessories to meet your requirements

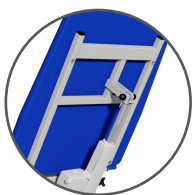
### Overall Dimensions

Length: 183cm (72") approx  
 Width: 63cm (25") approx  
 Height: 50cm - 98cm approx  
 (20" - 39") approx

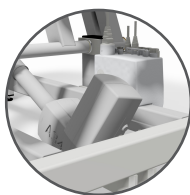
### Upholstery Dimensions



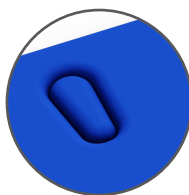
### Options & Accessories:



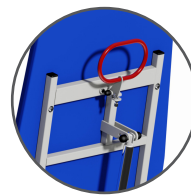
Motorised Backrest



Battery Back-up



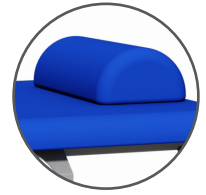
Breathing Hole



CPR Motor Back

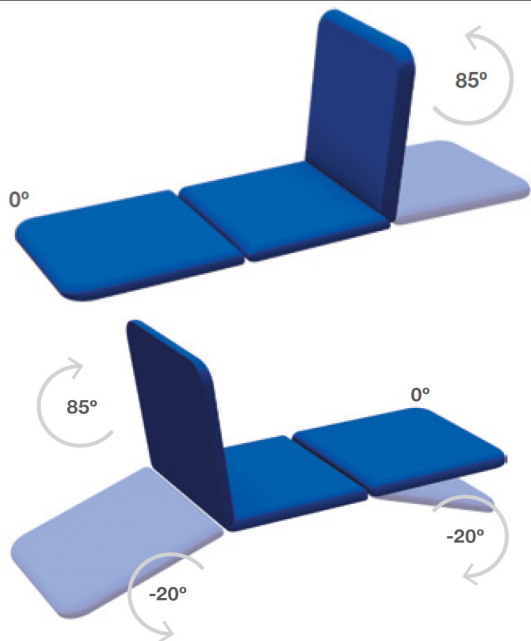


Padded Fold Down Side Support Rails



D Cushion

## Operational Parameters



Model 503OPE - Electric Version

Model 503OPH - Hydraulic Version

## Standard Features

- Designed and manufactured in the UK
- Lifetime frame & 5 year parts guarantee
- 16 year average lifespan
- Electric or hydraulic height operation
- Comfort foam
- Easy operation
- Hardwearing anti-microbial vinyl
- Safe working load 250kg
- 125mm twin wheel castors
- Central braking system
- Directional lock
- Hoist clearance 130mm
- Fold-down side support rails
- Paper roll holder

## Technical Standards

- IP Rating - IPx4
- EEC Classification - MDD93/42/EEC Annex IX Class 1
- Electrical Standard - IEC601 Part 1 + 60601 P (EN)
- Vinyl Flame Retardant to CRIB 5 (BS 7176)
- Foam to BS 5852: Part 2: 1982, Ignition Source 5 [CRIB 5]
- CE Marked
- Externally audited to ISO9001:2015 by LRQA

## Delivery Promise

- Delivery to UK mainland in just 7-10 working days
- Faster service may be available if required
- Overseas delivery 7-10 days plus shipping time

## Upholstery Vinyl

- Flame retardant to BS 5852 Ignition Source 5 - CRIB 5 (BS 7176) Medium Hazard
- Independently tested to verify effectiveness at reducing the spread of MRSA, E.coli & other similar bacteria & fungi
- Rated at 500,000 Martindale rubs without damaging or marking the top layer, making it suitable for all high-traffic, heavy-duty areas
- Phthalate free
- Please note: If the upholstery colour is not specified, 'Almond' will be supplied



Plinth Medical Ltd  
Barric Lane  
Occold, Eye  
Suffolk, United Kingdom  
IP23 7PX

t: +44 (0)1449767887  
e: sales@plinthmedical.com  
www.plinthmedical.com

**Plinth** | Medical