



Overview:

Designed specifically for lumbar and cervical traction procedures, this model features a friction free rolling top to maximise the effectiveness of applied traction forces for both static and intermittent traction procedures. The tables are available with either electric or hydraulic height adjustment. A platform mount is fitted for the addition of the optional traction machine and is height adjustable and suitable for use with several makes of traction unit. A cervical in sitting unit is also supplied as an alternative to cervical traction in lying. The traction mast, spreader bar and all necessary harnesses are included when purchasing the table or the package with the Tru-Trac Traction Machine.

Benefits

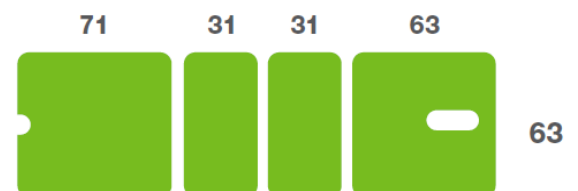
- Lifetime frame & 5 year parts guarantee - see website for further details
- Choice of electric or hydraulic height operation
- Adjustable angle backrest from horizontal to +85° with fittings for cervical in sitting procedures
- Positive and negative adjustment of head section from -20° to +85°
- Breathing hole and plug included in head section for prone procedures
- Adjustable height traction machine mount included
- Cervical in sitting accessory, traction mast and all harnesses included
- Safe working load and lifting capacity of 250kgs (550lb / 39 stone)
- Retractable wheel system provides easy positioning of the table
- Flexion stool optional with table but included with the Traction Package
- Low patient transfer height of 47cm (18")
- Wide choice of options, colours, and accessories



Overall Dimensions

Length: 198cm (78") approx
 Width: 63cm (25") approx
 Height: 47cm - 97cm approx
 (18" - 38") approx

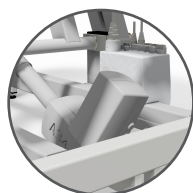
Upholstery Dimensions



Options & Accessories:



Flexion Stool



Battery Back-up



Traction Machine



Foot Switch
Operation



Spare Harness
Set

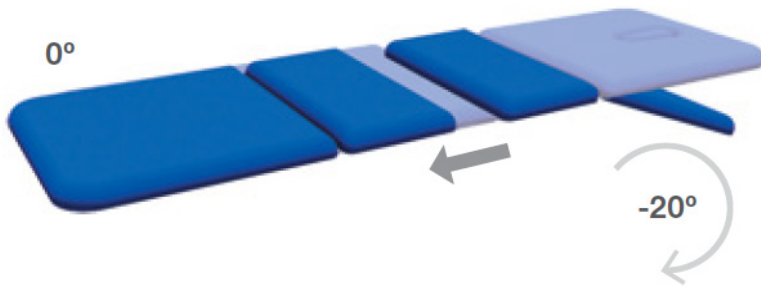


D Cushion

Operational Parameters



Rolling Top Movement: 14cm



Model 502TE - Electric Table

Model 502TH - Hydraulic Table

Model 502TPE - Electric Package

Standard Features

- Designed and manufactured in the UK
- Lifetime frame & 5 year parts guarantee
- 16 year average lifespan
- Hydraulic or electric operation
- Comfort foam
- Breathing hole and plug
- Low running costs
- Hardwearing anti-microbial vinyl
- Safe working load 250kg
- Retractable castors
- Hoist clearance 130mm
- Harness set (cervical & lumbar traction)
- Friction free rolling top
- Mast & spreader bar
- Traction machine table

Technical Standards

- IP Rating - IPx4
- EEC Classification - MDD93/42/EEC Annex IX Class 1
- Electrical Standard - IEC601 Part 1 + 60601 P (EN)
- Vinyl Flame Retardant to CRIB 5 (BS 7176)
- Foam to BS 5852: Part 2: 1982, Ignition Source 5 [CRIB 5]
- CE Marked
- Externally audited to ISO9001:2015 by LRQA

Delivery Promise

- Delivery to UK mainland in just 7-10 working days
- Faster service may be available if required
- Overseas delivery 7-10 days plus shipping time

Upholstery Vinyl

- Flame retardant to BS 5852 Ignition Source 5 - CRIB 5 (BS 7176) Medium Hazard
- Independently tested to verify effectiveness at reducing the spread of MRSA, E.coli & other similar bacteria & fungi
- Rated at 500,000 Martindale rubs without damaging or marking the top layer, making it suitable for all high-traffic, heavy-duty areas
- Phthalate free
- Please note: If the upholstery colour is not specified, 'Almond' will be supplied



Jasmine



Battleship



Cobalt



Cocoa



Grape



Mulled Wine



Pillarbox



Gingersnap



Candy



Applemint



Sapphire



Atlantic Blue



Lupin



Denim



Cool Blue



Rainforest



Wasabi



Citrus Green



Marigold



Almond

Plinth Medical Ltd
Barric Lane
Occold, Eye
Suffolk, United Kingdom
IP23 7PX

t: +44 (0)1449767887
e: sales@plinthmedical.com
www.plinthmedical.com

Plinth | Medical