

### Overview:

This model has been designed to provide movement of the patient within the clinic or department for recovery purposes or for transferring them to other areas of the hospital. For this purpose, the couch is fitted with a large wheel system with steering facilities and side support rails for patient security. Additionally, there is an adjustable backrest to support the patient in a sitting position and there is a choice of hydraulic or electric height operation.

### Benefits

- Lifetime frame & 5 year parts guarantee - see website for further information
- Suitable for patient transport
- Backrest adjustable from -20° to +85° for supporting the patient in a sitting position
- Choice of hydraulic or electric height operation
- Safe working load and lifting capacity of 250kg (550lb / 39 stone)
- Large central locking castors with steering facilities
- Fold-down side support rails fitted as standard
- Wide choice of options, width and accessories to meet your requirements

### Overall Dimensions

Length: 188cm (74") approx  
 Width: 63cm (25") approx  
 Height: 50cm - 98cm approx  
 (20" - 39") approx

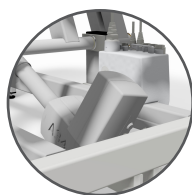
### Upholstery Dimensions



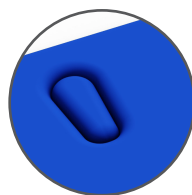
### Options & Accessories:



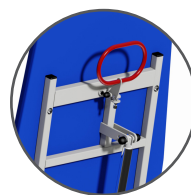
Electric Backrest



Battery Back-up



Breathing Hole



CPR Motor Back

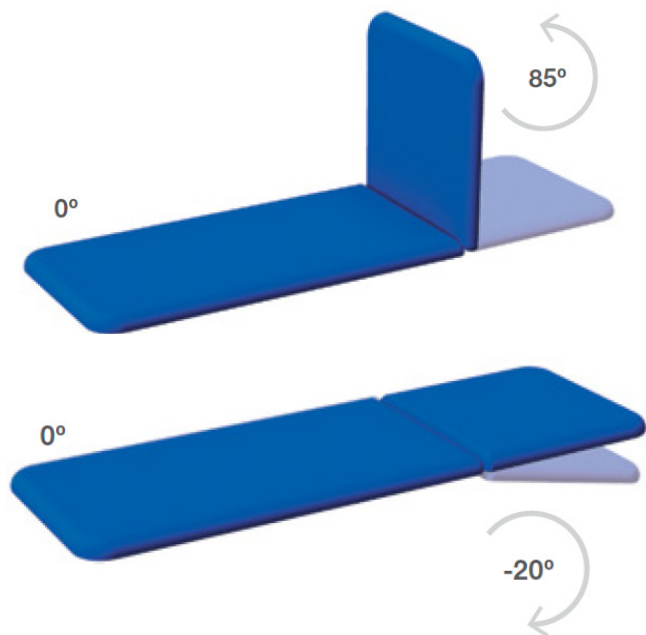


Side Support Pads



D Cushion

## Operational Parameters



Model 502OPE - Electric Version

Model 502OPH - Hydraulic Version

## Standard Features

- Designed and manufactured in the UK
- Lifetime frame & 5 year parts guarantee
- 16 year average lifespan
- Hydraulic or electric height operation
- Comfort foam
- Easy operation
- Hardwearing anti-microbial vinyl
- Safe working load 250kg
- 125mm twin wheel castor
- Central braking system
- Direction lock
- Hoist clearance 130mm
- Fold-down side support rails
- Paper roll holder

## Technical Standards

- IP Rating - IPx4
- EEC Classification - MDD93/42/EEC Annex IX Class 1
- Electrical Standard - IEC601 Part 1 + 60601 P (EN)
- Vinyl Flame Retardant to CRIB 5 (BS 7176)
- Foam to BS 5852: Part 2: 1982, Ignition Source 5 [CRIB 5]
- CE Marked
- Externally audited to ISO9001:2015 by LRQA

## Delivery Promise

- Delivery to UK mainland in just 7-10 working days
- Faster service may be available if required
- Overseas delivery 7-10 days plus shipping time

## Upholstery Vinyl

- Flame retardant to BS 5852 Ignition Source 5 - CRIB 5 (BS 7176) Medium Hazard
- Independently tested to verify effectiveness at reducing the spread of MRSA, E.coli & other similar bacteria & fungi
- Rated at 500,000 Martindale rubs without damaging or marking the top layer, making it suitable for all high-traffic, heavy-duty areas
- Phthalate free
- Please note: If the upholstery colour is not specified, 'Almond' will be supplied



Jasmine



Battleship



Cobalt



Cocoa



Grape



Mulled Wine



Pillarbox



Gingersnap



Candy



Applemint



Sapphire



Atlantic Blue



Lupin



Denim



Cool Blue



Rainforest



Wasabi



Citrus Green



Marigold



Almond

Plinth Medical Ltd  
Barric Lane  
Occold, Eye  
Suffolk, United Kingdom  
IP23 7PX

t: +44 (0)1449767887

e: sales@plinthmedical.com

www.plinthmedical.com

**Plinth** | Medical