

Adjusted by:

E-mail:

Adjusted for:

Tel:

Date:

Save the guide to the "desktop" and open it with **Adobe Reader**, for best function. Design your wheelchair by clicking in the circles in this guide. Blue, underlined text is clickable to show info or image.
BB = seatwidth, **HH** = backrest height

Seat height and rear axle

Seat height-raising the Carbon rear axle

- +10 mm**
3302510
- +20 mm**
3302520
- +30 mm**
3302530
- +40 mm**
3302540
- +50 mm**
3302550
- +60 mm**
3302560
- +70 mm**
3302570

Rear axle Carbon +15mm should be used at increased seat height.
 If you raise the wheelchair at the rear, you must also raise it equally in the front Panthera will choose the best combination of castor fork and rear wheels, if nothing has been noted. Link to [Excel guide](#) for choice of castor fork.
 NOTE! If there is need for lowering the seat height of the wheelchair, please contact Panthera for more information.

Castor fork _____ **x2**

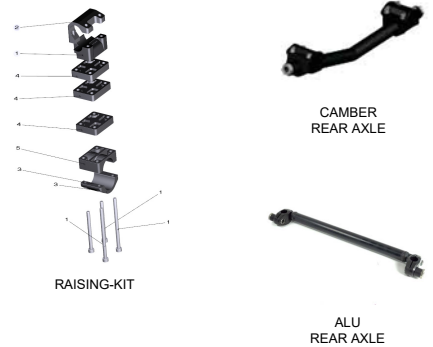
Rear axle Camber

- 2 degrees**
334 02
- 4 degrees**
334 04
- 8 degrees**
334 08

Alu rear axle

Used together with one arm drive and assistant brake

- Rear axl Alu**
33000



Foot rest

Foldable footplates

- Extended tubes, 33-45***
extended tubes 4 cm, compl. pair 672 00
- Large footplates 33- 50****
extended, 8 cm, footplates, compl. pair 673 00

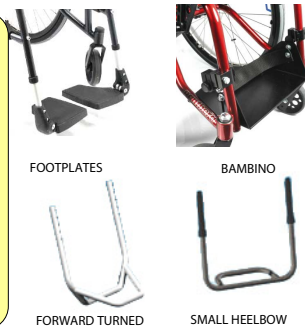
*Footrest tube 4 cm longer
 ** Footplates extended forward 8 cm

Footrest

- Forward turned 33-45**
for S series, extended 25 mm 41200
- Small heel bow, 36,39**
for more space between the feets 36001
BB =37 for 36cm, 38 for 39cm

Bambino footplate

- Bambino footplate, 30- 39**
40021
- Bambino fotplatta, Swing-up 30- 39**
40023



Rearwheel - without pushrim

DD =31 for 22", 32 for 20"

- 20",22", **Standard**
1 0000 (x2 / wheelchair)
- 24" **Spider ***
1100040 (x2 / rullstol)
- 24" **Mountain bike**
1102450 (x2 / wheelchair)

- 24" **Spinergy**
See below (x2 / wheelchair)
art.nr. 120

Spinergy **SPOX / LX**
 Delivery time 10 weeks
 Make your choices below to create art.no.

Type: _____ Hub: _____
 Size: _____ Spokes: _____

To be sure that the combination is possible to order, please contact Panthera. panthera@panthera.se, +46-8-761 50 40

* Max. user weight 125 kg



Pushrim

- Titanium, 20,22,24,25,26"**
190 11 (x2 / wheelchair)
- Titanium for Spider, 24"**
1902421 (x2 / wheelchair)
- Titanium for mountainbike, 24"**
1902401 (x2 / wheelchair)
- Paragrip, 20,22,24,25,26"**
19051 BT (x2 / wheelchair)
- Tetragrip, 20,22,24,25,26"**
19052 BT (x2 / wheelchair)
- Maxgripp, 24"**
1903020 (x2 / wheelchair)
- Maxgrip 22"**
1903080 (x2 / wheelchair)
- Maxgrip, 20"**
1903070 (x2 / wheelchair)
- Maxgrip, Spider 24"**
1903045 (x2 / wheelchair)
- Aluminum, 24"**
190 30 (x2 / wheelchair)
- Alu X, 24, 25"**
190440 (x2 / wheelchair) 4=24", 5=25", 6"26"

DD =Rearwheel size



One arm drive

- 24" **One hand drive Alu-pushrim**
11015
DD =20 for 20", 22 for 22", 24 for 24",26 for 26"
 - 24" **One hand drive Friction-pushrim**
11015
DD =30 for 20", 32 for 22", 34 for 24",36 for 26"
 - Mounted left side
 - Mounted right side
- Delivery time 10 +5 days
- mounted together with [old std rear axle](#)



Assistant brake only with pushbar

Assistant brake (only with push bar) mounted together with [old std rear axle](#)

[More info at the homepage](#)

[Assistant brake 24"](#)

11035BB (backrest height 25-30 cm) 11036BB (backrest height 35-40 cm)

[Assistant brake 22"](#)

11033BB (backrest height 25-30 cm) 11034BB (backrest height 35-40 cm)

If you wish to combine the assistance brakes with armrest for wheelchairs in the S3-series, you'll need Armrest **S3 26"**. This is to avoid conflict between the tyres and the sideguard of the armrest.



ASSISTANT BRAKE

Accessories

Torso support

Does not fit backrest height 20 cm

[Torso sup. S3 pair](#)

6770200 / 6770300 VER2

[Torso sup. S3 Left](#)

6770205 / 6770305 VER2

[Torso sup. S3 Right](#)

6770206 / 6770306 VER2

Amputation support

[Amputation support, pair](#)

6760500

[Amputation support, left](#)

6760502

[Amputation support, right](#)

6760501

Freewheel

[Freewheel](#) [Info](#)

2600102

[Freewheel Bambino](#)

2600103 without footplate

Tetra QR

[Tetra QR STD](#)

4800000

[Tetra QR SPOX](#)

4800005



TORSO SUPPORT



FREEWHEEL



TETRA QR STD



TETRA QR SPOX



AMP.SUPPORT

Others

[Backpack](#)

9900260

[Compressor pump](#)

4900009

[Hand pump](#)

4900007

[Seat bag](#)

9900212



BACK PACK



COMPRESSOR PUMP



HAND PUMP



SEAT BAG

Extra